



BRECKINRIDGE PLACE

RETIREMENT COMMUNITY

**A LUXURIOUS
ENVIRONMENT
AT AN
AFFORDABLE
PRICE!**



**ESTABLISHED
2010**

NURSING & PERSONAL CARE LIVING AT BRECKINRIDGE PLACE

TWENTY-FOUR HOUR NURSING CARE

Breckinridge Place Nursing Care is designed for seniors who are in need of personalized 24-hour professional nursing care. Breckinridge Place Nursing Care offers an integrated program of medical and supportive services to strengthen a resident's physical, mental, emotional, and spiritual well-being.

Breckinridge Place offers Medicare rehabilitation programs that provide skilled nursing and therapy following a hospital stay. Our multidisciplinary program includes round-the-clock nursing care, rehabilitative therapies and comprehensive health-related services as well as social services and therapeutic activities administered by our compassionate staff.

Whether it is a Medicare rehabilitative stay or long-term care, our Health Care Center is committed to personalized nursing care that makes our residents and their family's satisfaction top priority.

ALL NURSING ROOMS ARE PRIVATE



PERSONAL CARE

Breckinridge Place Personal Care Living is for seniors who wish to live independently but require assistance with activities of daily living including bathing, dressing, and medication administration.

Maintenance, housekeeping, linen and personal laundry service, and all utilities (with the exception of internet and telephone service) are included.

Three nutritious meals are served each day restaurant-style in our dining room. Snacks are provided throughout the day. A dietary consultant is available to monitor our residents specific nutritional needs.

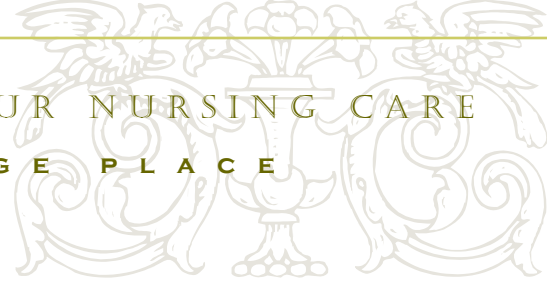
For our residents well-being, an emergency call system is located in the bedroom and bathroom of each apartment. Bed checks are conducted during the evening and residents receive daily clinical monitoring.

Residents participate in daily activity programs, exercise programs, and special recreational and educational events. And, whenever you need to travel, transportation (with attendant services available) is provided.





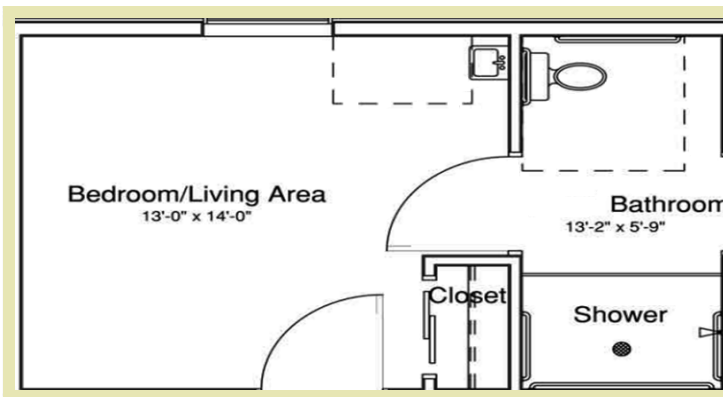
TWENTY-FOUR HOUR NURSING CARE BRECKINRIDGE PLACE



NURSING SUITE

Each Resident Nursing Suite includes;

- ~ Private Room
- ~ All utilities except personal phone & internet (includes basic cable)
- ~ Assistance with personal activities such as, bathing and dressing
- ~ 24 hour monitoring of emergency alert system



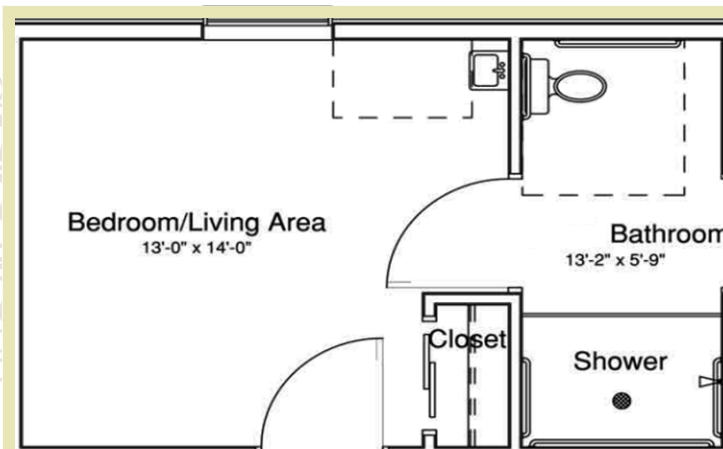
- ~ Three delicious meals per day plus snacks
- ~ Around the clock professional nursing staff
- ~ Social, cultural and spiritual programs
- ~ Scheduled transportation
- ~ Full service beauty / barber shop
- ~ Weekly housekeeping including bed sheets and personal laundry

PLEASE CALL FOR PRICING

PERSONAL CARE APARTMENT

Each Personal Care apartment includes;

- ~ Semi-private room with Private Bath
- ~ All utilities including basic cable television (telephone and internet not included)
- ~ Three delicious meals per day plus snacks
- ~ Around the clock professional nursing staff
- ~ 24 hour monitoring of emergency alert system



- ~ Assistance with personal activities, bathing and dressing
- ~ Social, Cultural and Spiritual programs
- ~ Scheduled transportation
- ~ Full service beauty / barber shop
- ~ Weekly housekeeping including changing and laundering of bed sheets and personal laundry

PLEASE CALL FOR PRICING



BRECKINRIDGE PLACE

WWW.BRECKINRIDGEPLACE.ORG



OUR CORNERSTONES:

- ~ Take ownership and pride in everything we do.
- ~ Recognize that good people make the difference and are the key to our success.
- ~ Work together as one team.
- ~ Provide meaningful rewards for residents, associates and shareholders.
- ~ Respect others through honesty, understanding and trust.
- ~ Put the resident first and the “bottom line” will take care of itself.
- ~ Have fun and celebrate life every day.



Through the Seasons of Life

Breckinridgeplace.org

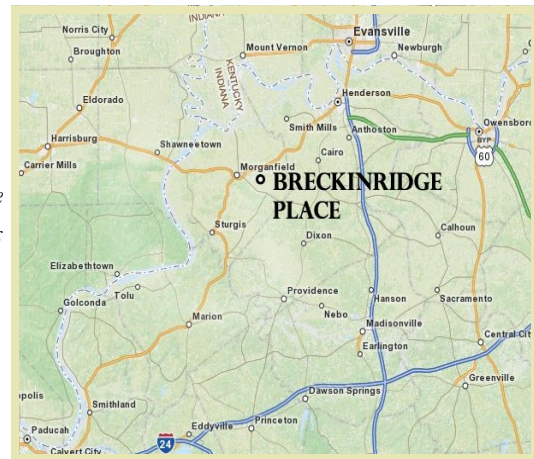
270-822-4218

Breckinridge Place is a wonderful place to call home. Nestled in the midst of Morganfield, Kentucky is a beautiful community with a handsomely landscaped campus.

**BRECKINRIDGE PLACE
170 SYKES BLVD.
MORGANFIELD, KY
42437**

At Breckinridge, we understand that “home” has a different meaning to each of us. For this reason, we offer a variety of options for our residents. Upon moving in, residents choose from multiple floor plans. No matter which floor plan the resident chooses; utilities, cable, and housekeeping services are included. Also included are three home-cooked meals per day, and yes, each meal comes with lots of choices.

We believe that each resident is special and deserves to maintain their independence and dignity throughout the seasons of life. Come by today and see why Breckinridge Place is the premier retirement choice in the Union County.



BRECKINRIDGE PLACE ACCEPTS CLIENTS FOR CARE, REGARDLESS OF AGE, COLOR, NATIONAL ORIGIN, RELIGION, SEX, DISABILITY, BEING A QUALIFIED DISABLED VETERAN, BEING A QUALIFIED DISABLED VETERAN OF THE VIETNAM ERA, OR ANY OTHER CATEGORY PROTECTED BY LAW, OR DECISIONS REGARDING ADVANCED DIRECTIVES.